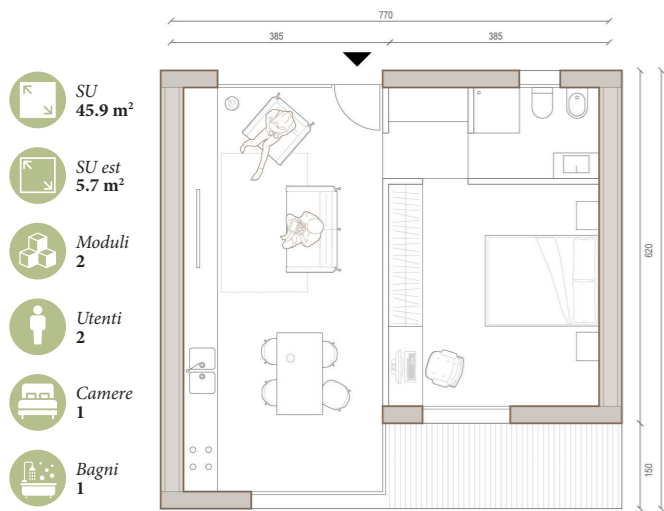
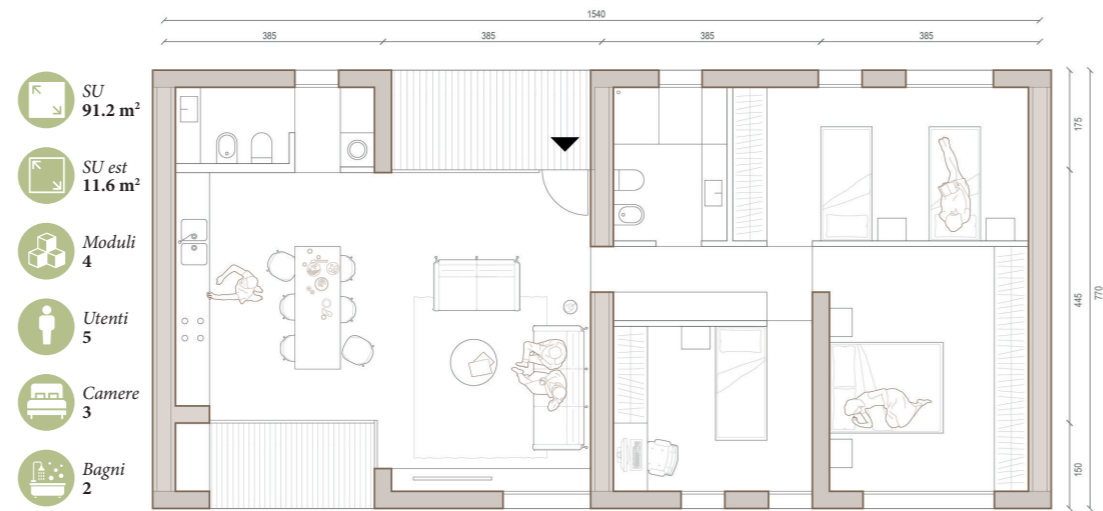


PD-B8UMG8



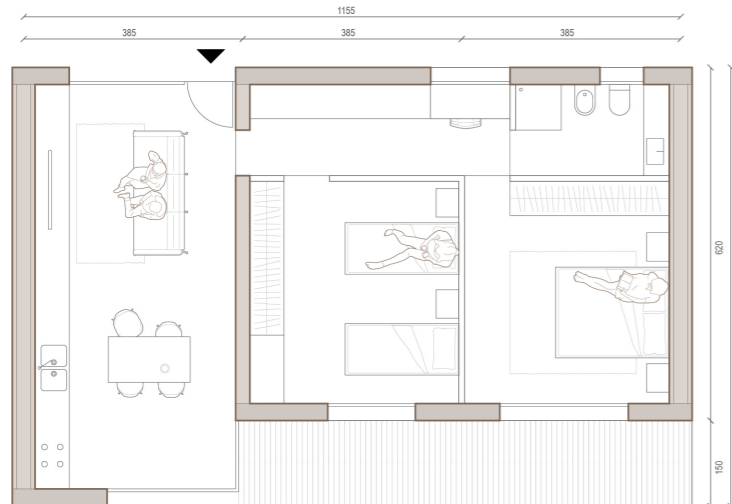
BILOCALE

- SU 45.9 m²
- SU est 5.7 m²
- Moduli 2
- Utenti 2
- Camere 1
- Bagni 1

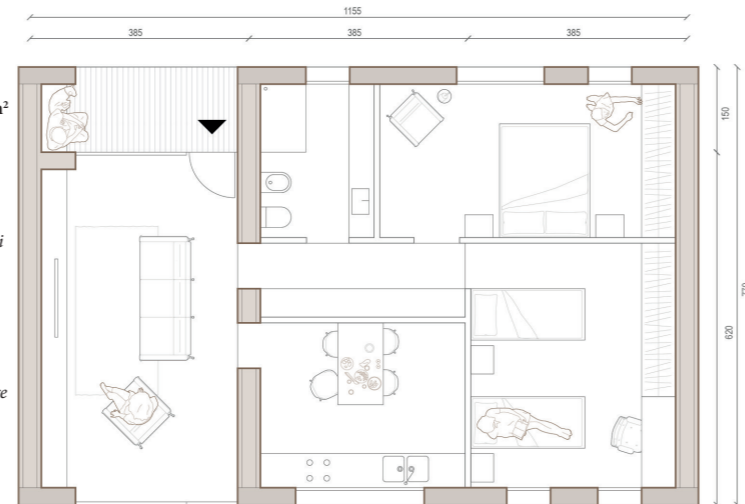


QUADRILOCALE

- SU 91.2 m²
- SU est 11.6 m²
- Moduli 4
- Utenti 5
- Camere 3
- Bagni 2

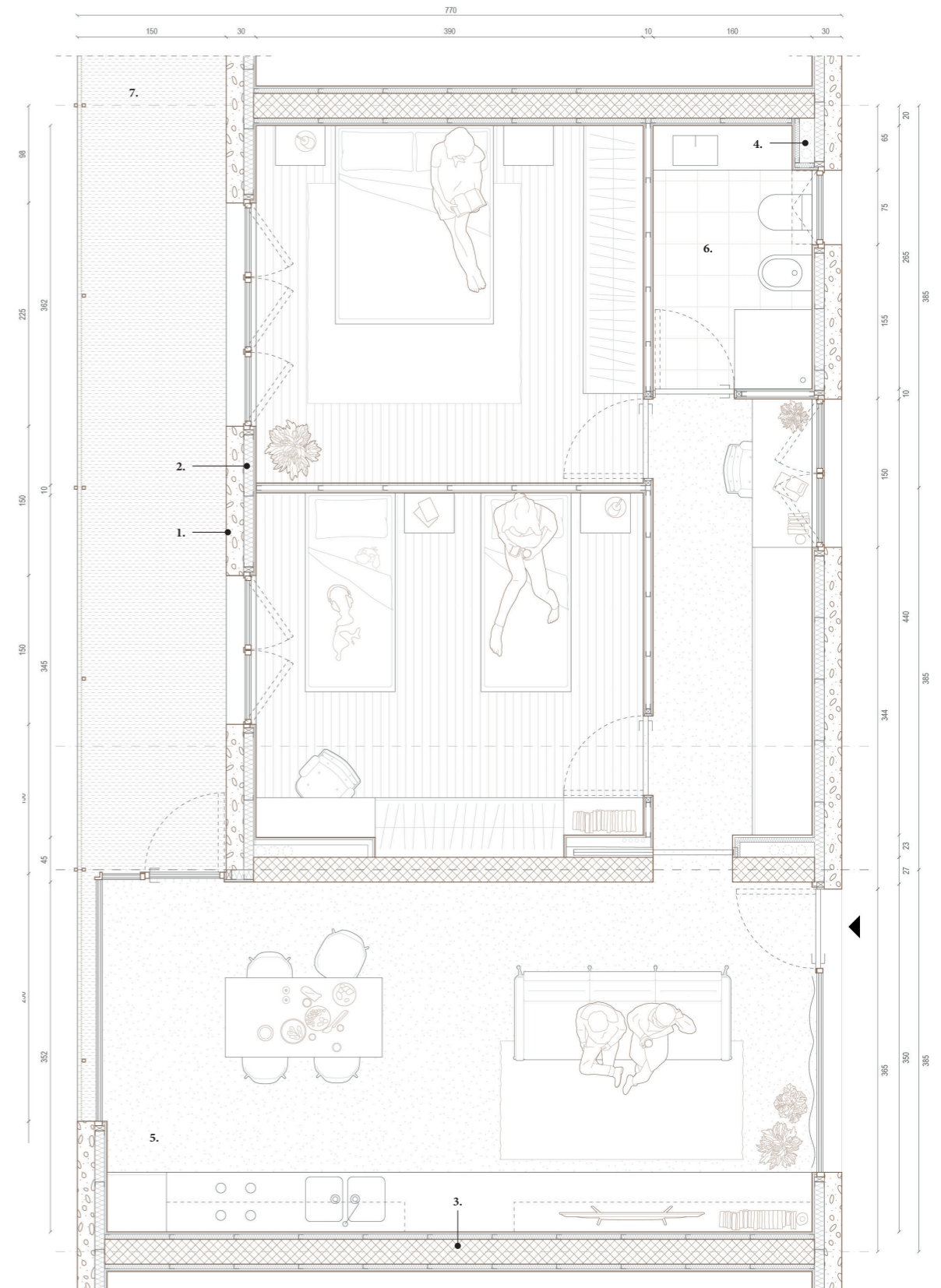


TRILOCALE - OPEN SPACE



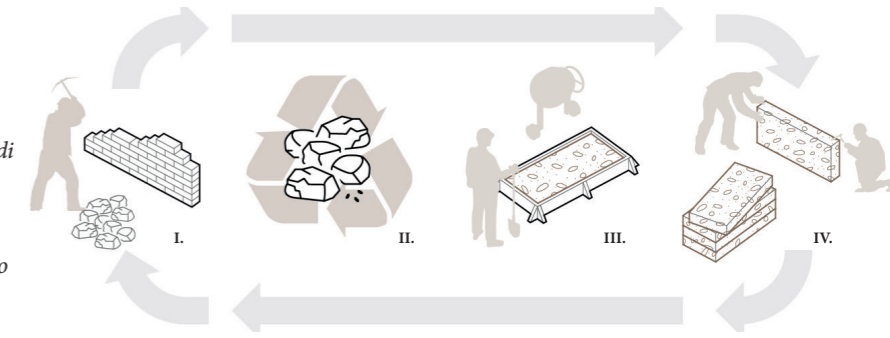
TRILOCALE - CUCINA SEPARATA

- SU 74.1 m²
- SU est 5.7 m²
- Moduli 3
- Utenti 4
- Camere 2
- Bagni 1



LEGENDA FINITURE:

1. Rivestimento in pannelli in conglomerato cementizio, inerti riciclati e fibre naturali
2. Controparete in doppia lastra di cartongesso + isolante termico
3. Struttura portante in CA
4. Cavedio per passaggi impianti
5. Pavimentazione in calcestruzzo industriale
6. Pavimentazione in gres



PROCESSO PRODUTTIVO PANNELLI RIVESTIMENTO