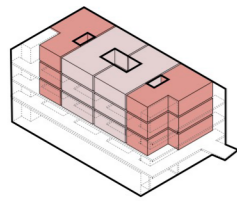
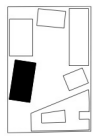
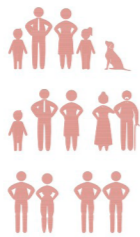
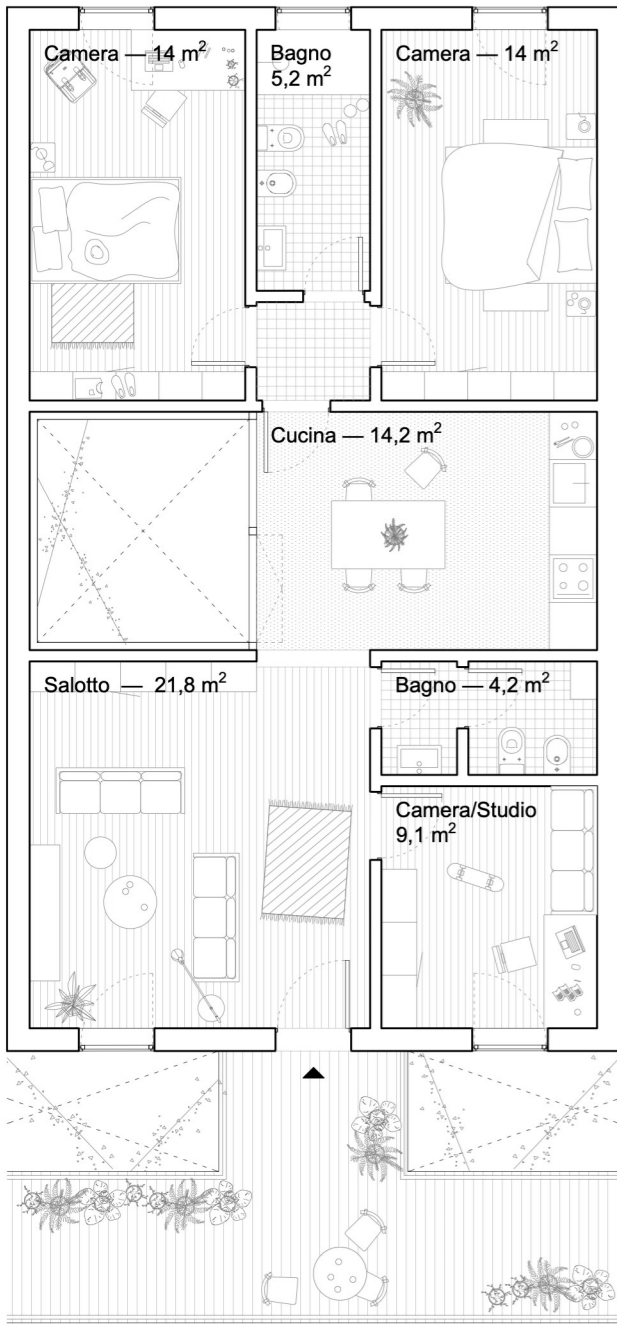


## EDIFICIO A

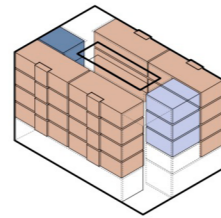


Tot: 12 unità

■ Tilocale 88 mq SL ■ Quadrilocale 98 mq SL

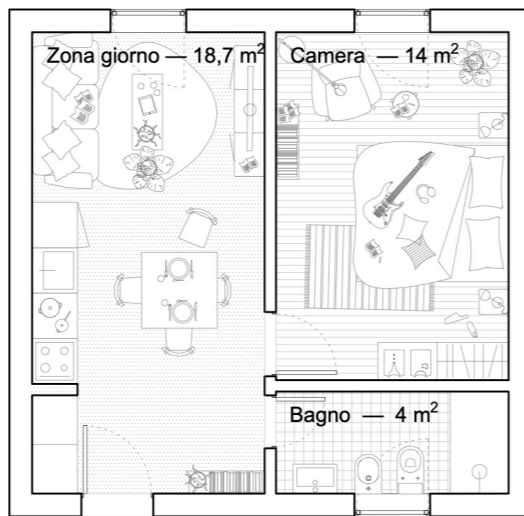
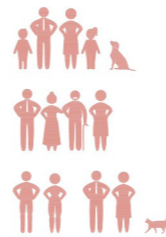
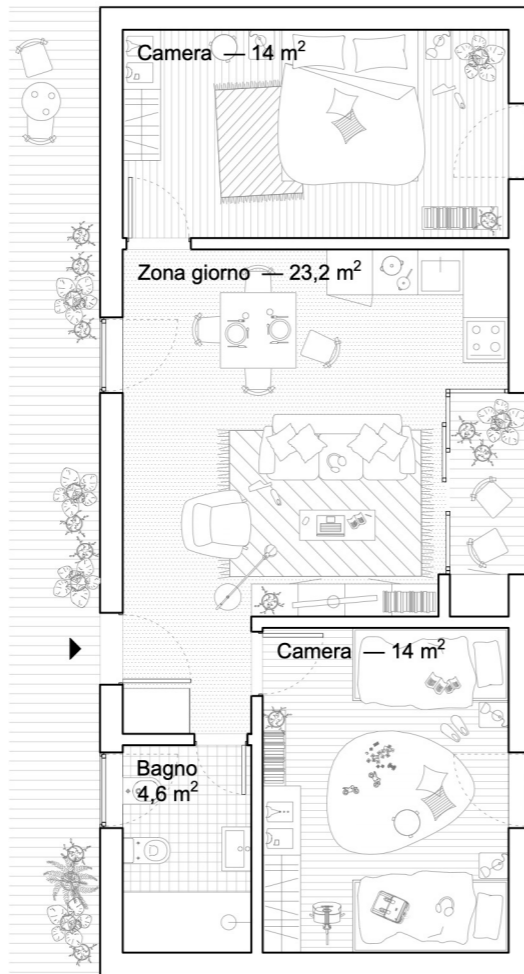


## EDIFICIO B

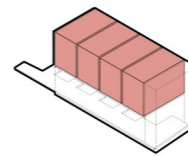


Tot: 19 unità + 3 jolly

■ Tilocale 71 mq SL ■ Bilocale 43 mq SL ■ Jolly

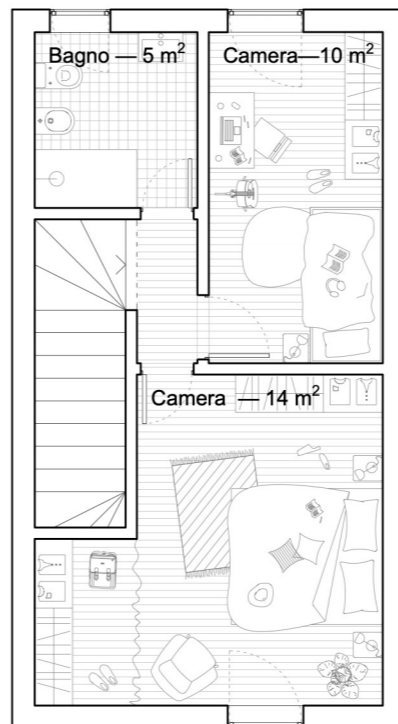
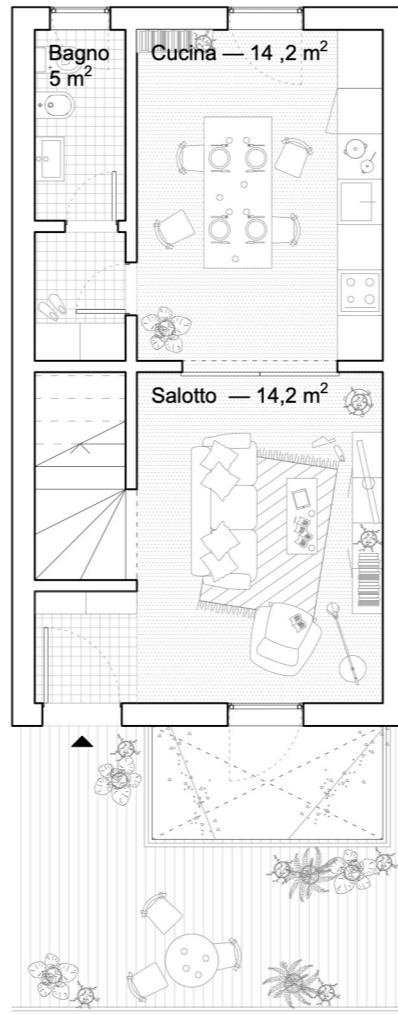


Totale: 12 unità



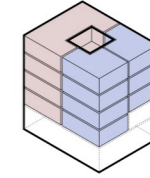
Tot: 4 unità

■ Tilocale duplex 90 mq SL



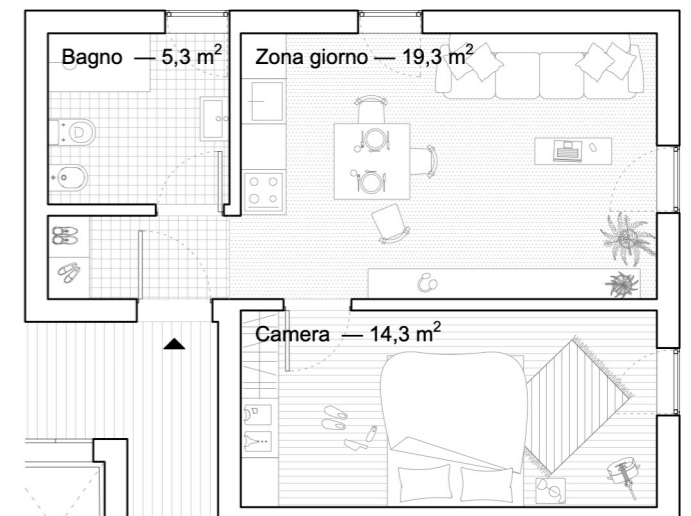
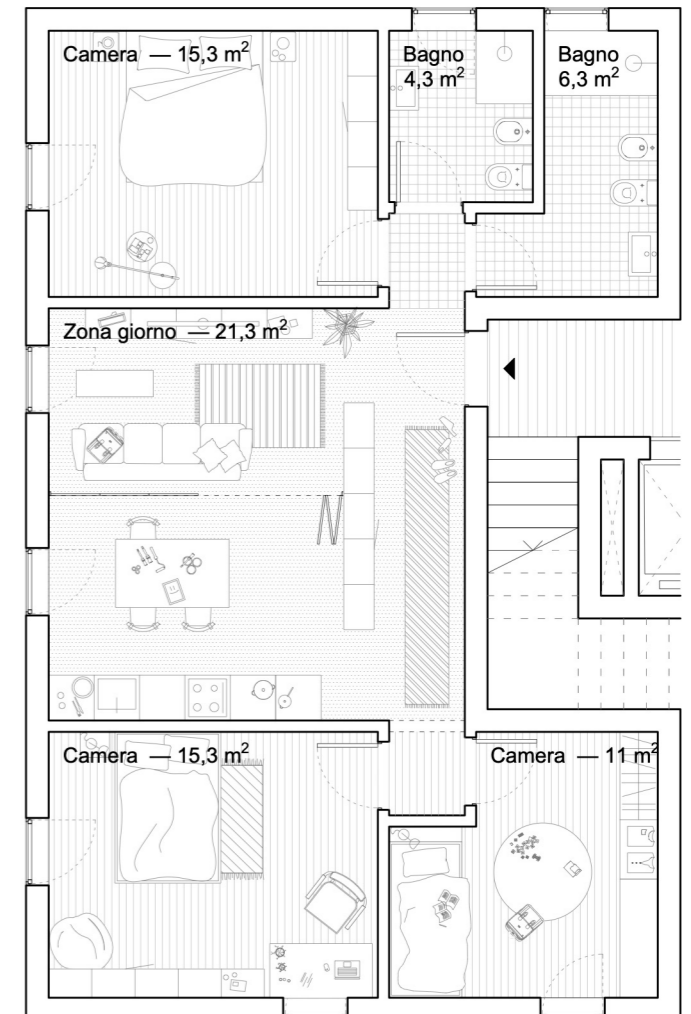
## EDIFICIO D

TO-YYTNP



Tot: 15 unità

■ quadrilocale 101 mq SL ■ Bilocale 44 mq SL



Bilancio complessivo: 46 alloggi + 3 Jolly

■ Bilocale	10	22%
■ Tilocale S	16	34%
■ Tilocale L	10	22%
■ Quadrilocale	10	22%



La Jolly (o Jocker Room) è un piccolo alloggio destinato ad occupazioni temporanee di breve durata. E' spazio extra per gli inquilini che possono riservarla per ospitare componenti del nucleo familiare o amici in visita.