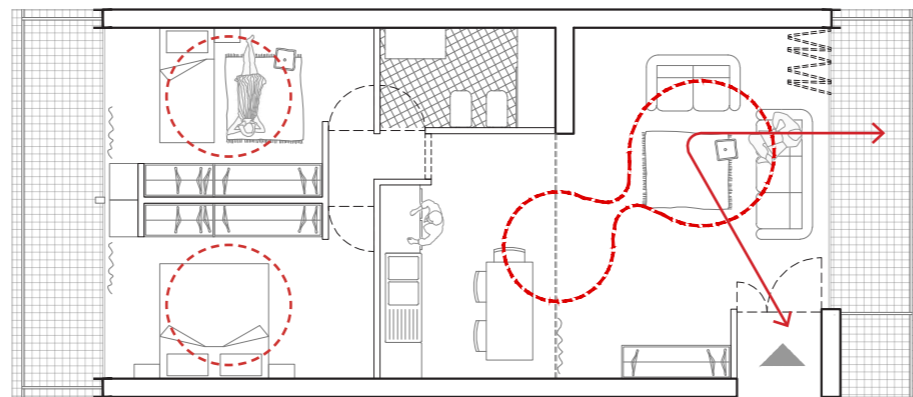
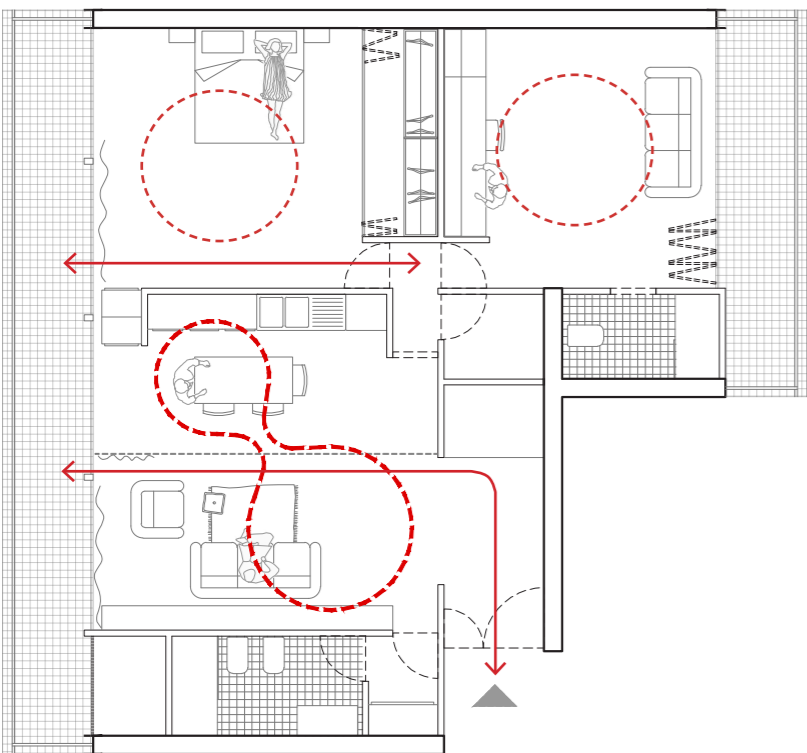


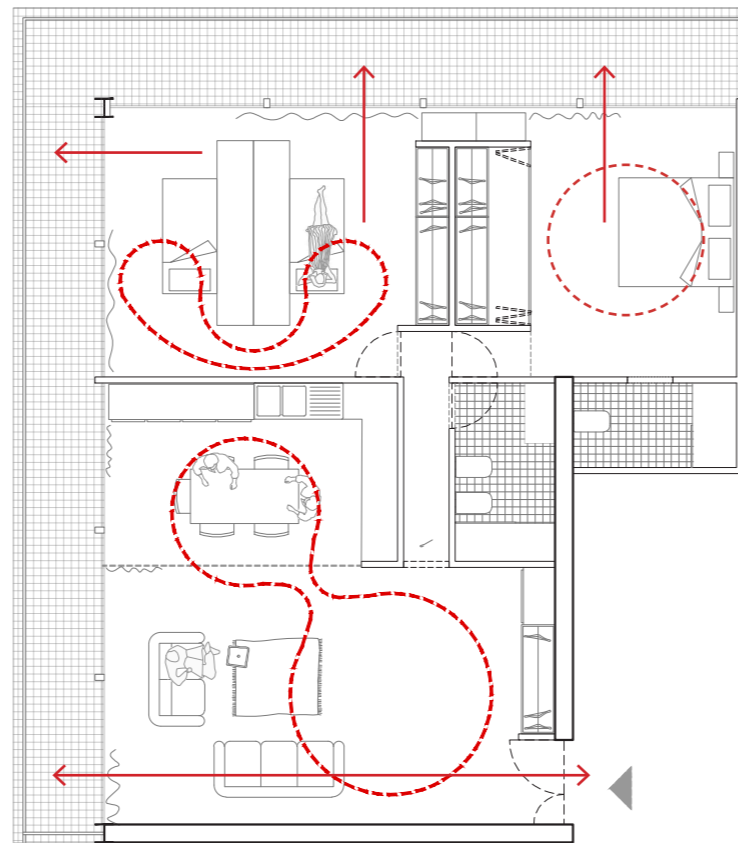
<b>Bilocale con cucina a vista</b>	<b>45 mq</b>
Salotto con cucina	21 mq
Camera	14,5 mq
Bagno	4,80 mq
Terrazza	9 mq



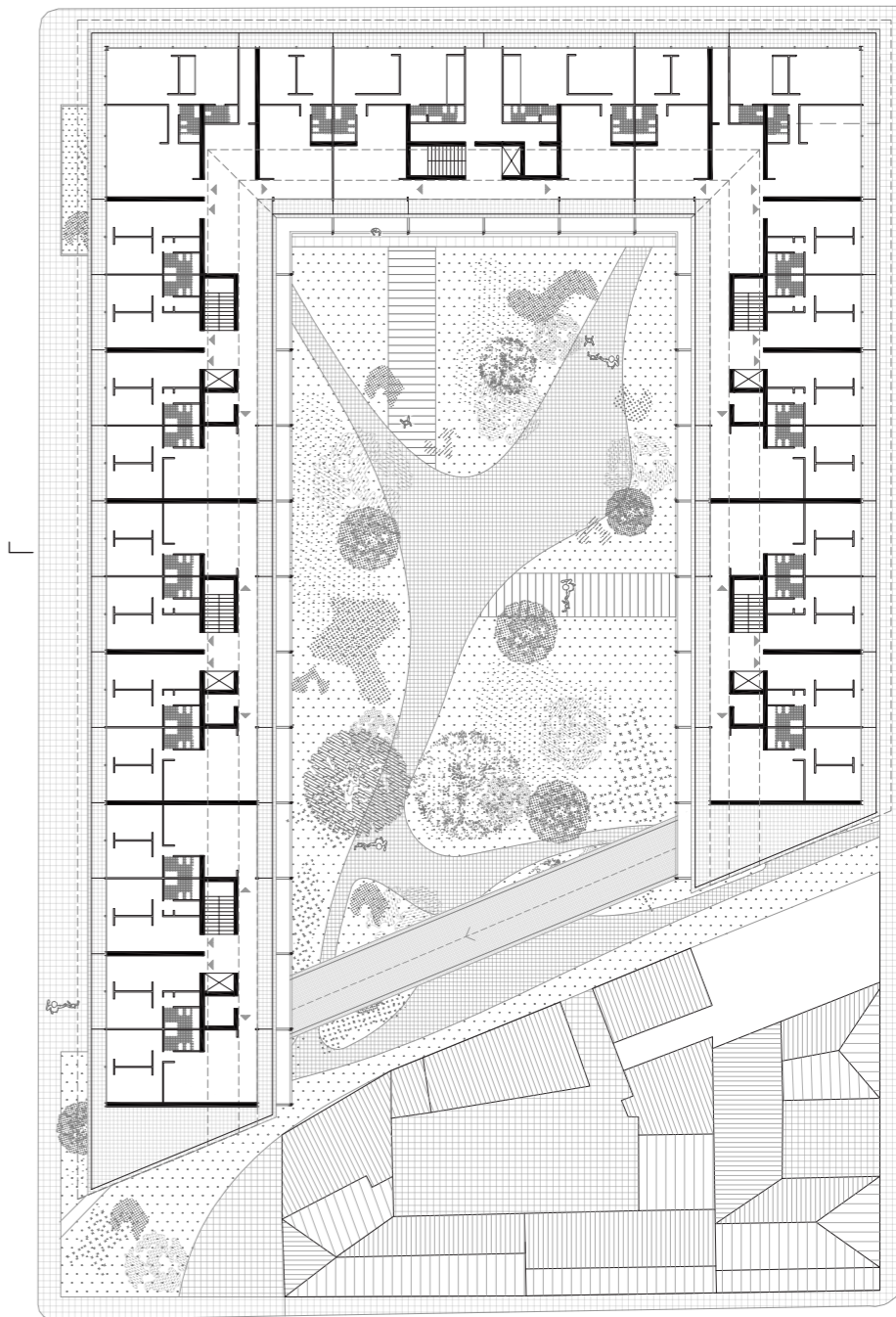
<b>Trilocale con cucina a vista</b>	<b>72 mq</b>
Salotto con cucina	30 mq
Camera matrimoniale	14,5 mq
Camera singola	12 mq
Bagno	4,80 mq
Terrazza 1	9 mq
Terrazza 2	9 mq



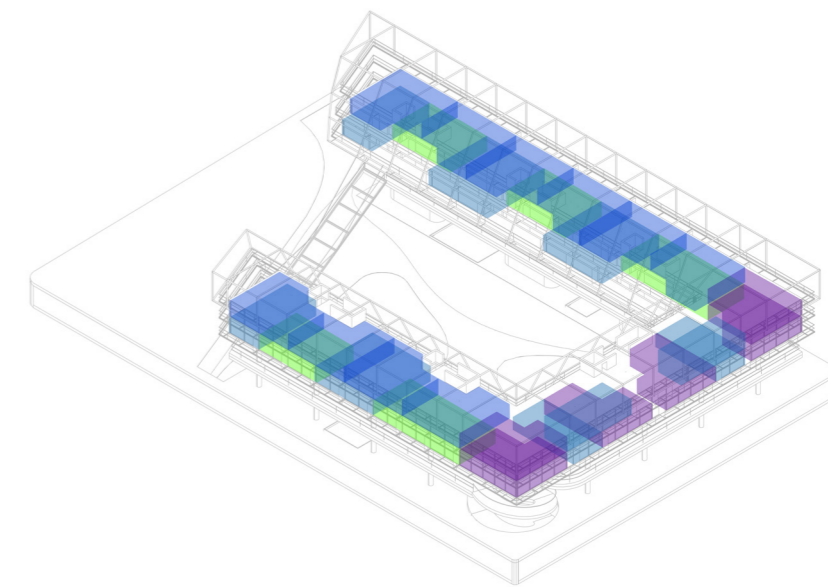
<b>Trilocale con cucina abitabile</b>	<b>98 mq</b>
Salotto con cucina	30 mq
Camera matrimoniale con cabina	24 mq
Studio / Camera 2	20 mq
Bagno 1	4,80 mq
Bagno 2	3,70 mq
Terrazza 1	16 mq
Terrazza 2	12 mq



<b>Quadrilocale con cucina abitabile</b>	<b>108 mq</b>
Salotto	30 mq
Cucina abitabile	14 mq
Camera matrimoniale	20 mq
Camera singola 1	12 mq
Camera singola 2	12 mq
Bagno 1	4,80 mq
Bagno 2	3,70 mq
Terrazza	30 mq



P2 - Piano residenziale tipo



● 12 Bilocali ● 12 Trilocali ● 10 Trilocali con cucina abitabile ● 6 Quadrilocali